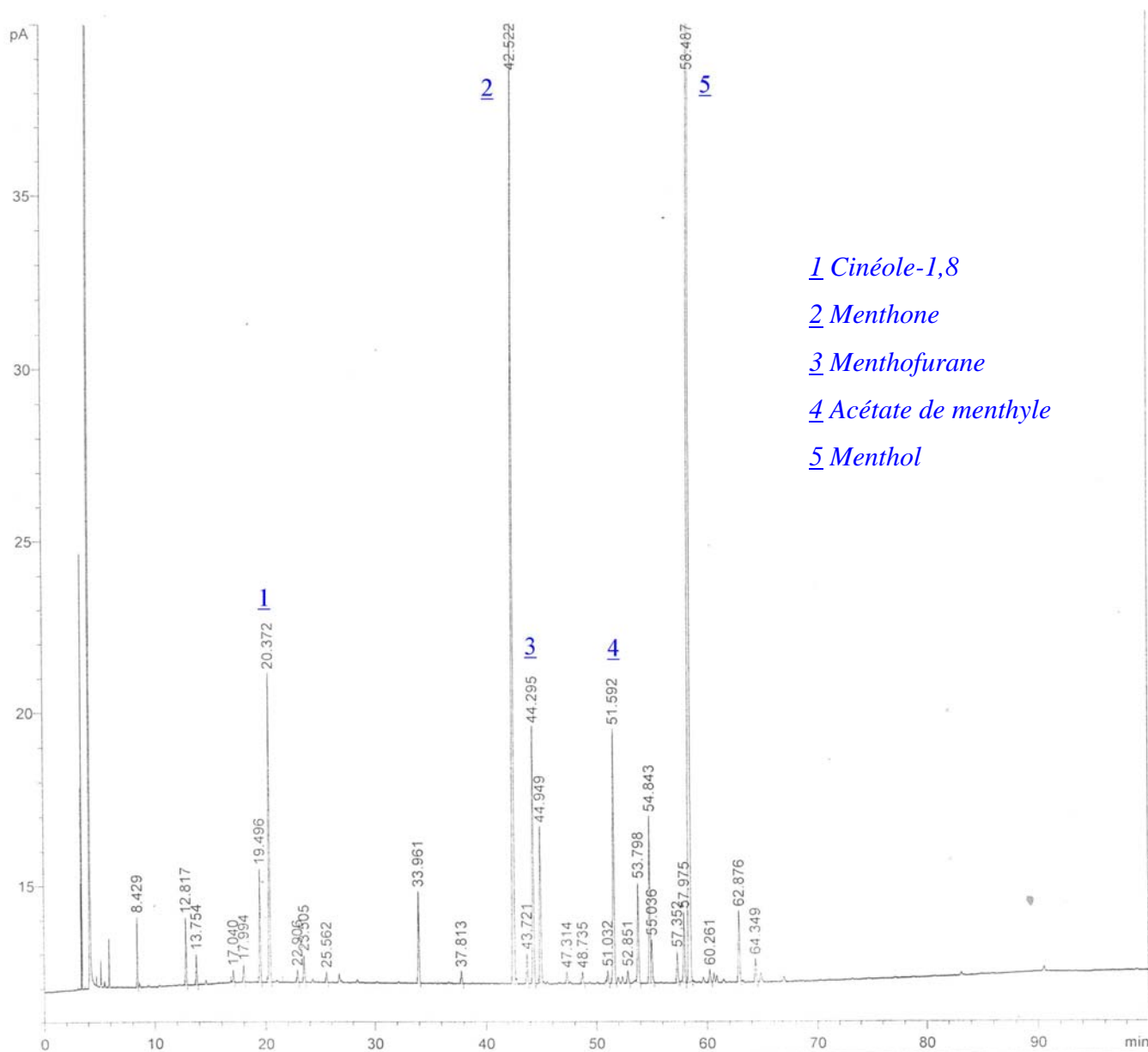


HUILE ESSENTIELLE DE MENTHE POIVREE 10013200





**HUILE ESSENTIELLE MENTHE
POIVREE
Code 10013200**

Date 09/02/2007

ESSENTIAL OIL OF PEPPERMINT

Analytical specifications

ANALYSIS

SPECIFICATIONS

CHARACTERISTICS

- Aspect : Colourless liquid, pale yellow to greenish yellow colour, characteristic odour and flavour, followed by a sensation of freshness (cold sensation).

IDENTIFICATION

- Chromatographic profile (2.2.28) : Conforming to the reference profile

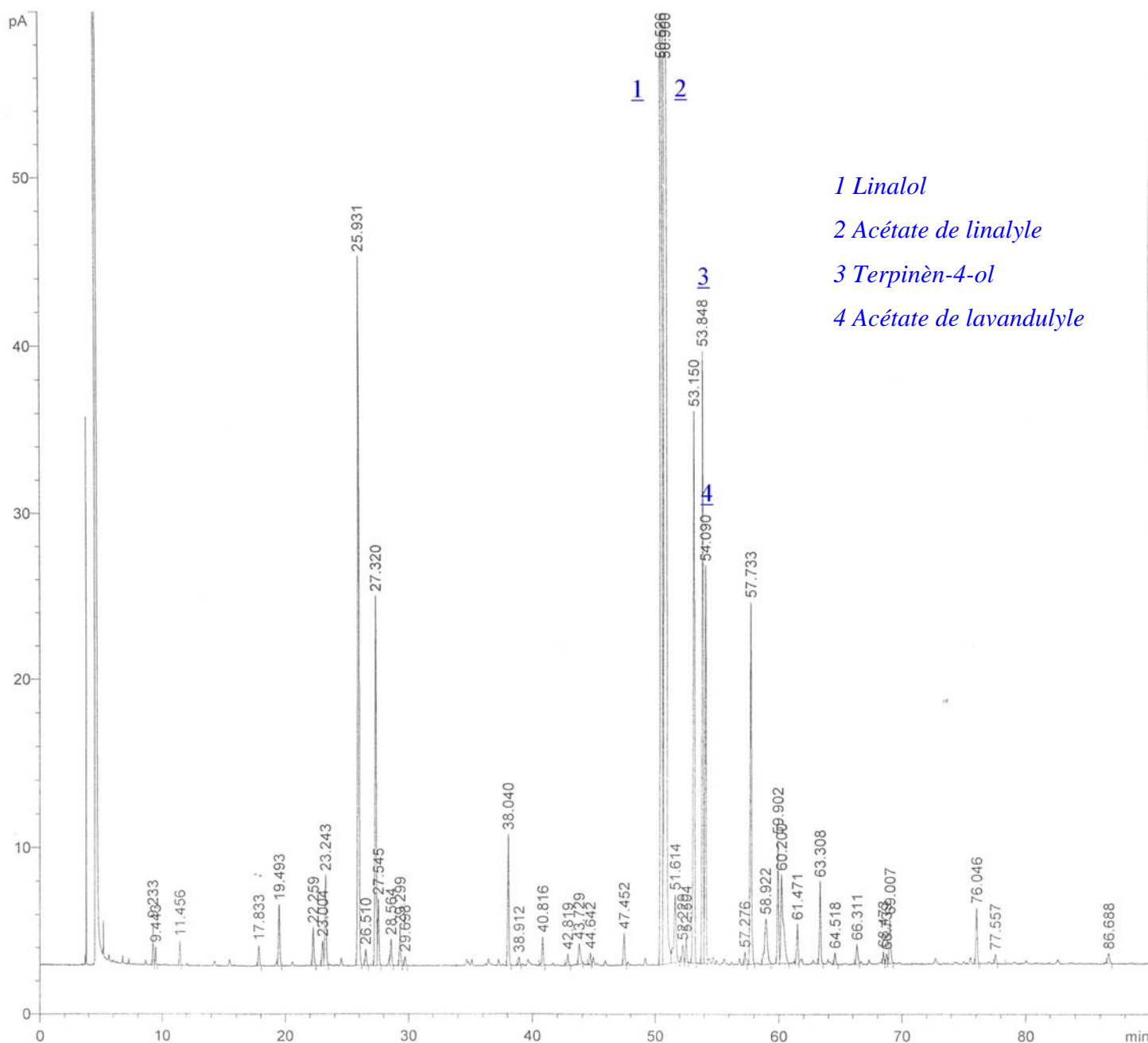
TEST

- Density (2.2.5) : 0.900 to 0.916
- Refractive index (2.2.6) : 1.457 to 1.467
- Rotary power (2.2.7) : -10° to -30°
- Acid index (2.5.1) : ≤ 1.4
- Fatty oils and resinified essential oils : Conforming to the monographic description

DOSAGE

- Chromatographic profile (2.2.28)
 - Limonene : ≤ 0.5 percent
 - 1,8-cineole : ≤ 1.0 percent
 - Menthone : ≤ 2.0 percent
 - Menthofuran : ≤ 0.5 percent
 - Isomenthone : 25.0 to 38.0 percent
 - Menthyl acetate : 25.0 to 45.0 percent
 - Isopulegol : 2.0 to 6.0 percent
 - Menthol : ≥ 2.0 percent
 - Pulegone : ≥ 0.3 percent
 - Carvone : ≤ 1.0 percent

HUILE ESSENTIELLE DE LAVANDE 10003727



ESSENTIAL OIL OF LAVENDER

Analytical Specifications

ANALYSIS

SPECIFICATIONS

CHARACTERISTICS

- Aspect : Clear liquid, colourless to pale yellow, characteristic fresh odour, floral and herbaceous

IDENTIFICATION

- Chromatographic profile (2.2.28) : Conforming to the reference profile

TEST

- Density (2.2.5) : 0.880 à 0.890
- Refraction Index (2.2.6) : 1.458 to 1.464
- Rotary power (2.2.7) : -11.5° to -7.0°
- Acid index (2.5.1) : ≤ 1
- Ester index (2.5.2) : 102.5 to 165.0

DOSAGE

- Chromatographic profile (2.2.28)
 - Limonene : ≤ 0.5 percent
 - 1,8-cineole : ≤ 1.0 percent
 - 3-octanone : ≤ 2.0 percent
 - Camphor : ≤ 0.5 percent
 - Linalol : 25.0 à 38.0 percent
 - Linalyle acetate : 25.0 à 45.0 percent
 - Terpinen-4-ol : 2.0 à 6.0 percent
 - Lavandulyl acetate : ≥ 2.0 percent
 - Lavandulol : ≥ 0.3 percent
 - Alpha-terpineol : ≤ 1.0 percent